



NASRIN MORADI
Architect and interior designer

THE EXTRAORDINARY TOUCH OF SPACE



This company provides architectural services and interior designs with premium quality and worldwide standards.

The main activities of this group are architectural design, interior design and implementation, design of structures, trading in building materials and decoration.

Our main customers are organizations, hotels, banks, restaurants, commercial centers.

Our main goal is to create innovative designs based on new ideas. In addition, providing new products in construction and decoration market.

FLYPERSIA OFFICIAL PROJECT



FLYPERSIA AIRLINE MANAGMENT UNIT INTERIOR DESIGN

Luxury modern interior design and decorating ideas give great inspirations for creating unique, stylish and inviting office designs. Contemporary lighting and natural wood materials, shiny leather and large windows make these office spaces bright and beautiful.

This luxury office design is a blend of various styles. These creative, surprising and innovative fusion of styles gives it a unique character and appeal. This office designs benefit from elements of Art Deco style. Columns and shiny surfaces, bronze color accents and artworks, and contrasting color combinations create a gorgeous interior design and decor. Stone floor and velvet curtains bring classy elements into the office design. Custom made desk gives a personal touch to the interior decorating.

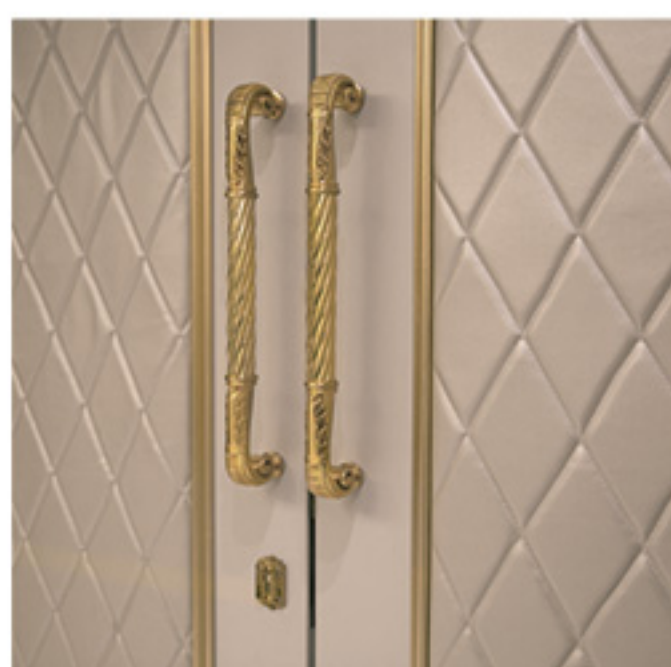




MANAGEMENT OFFICE PLAN



Where modernists crave originality, I crave beauty.



LAVASAN VILLA



Due to the requested spaces (for the design of a holiday-equipped villa), And also with regard to geometric shapes and the area of the context, we tried to have the largest natural south light of in the interior space (especially in the basement). With this simple idea, we were able to provide the most green spaces in front of the villa, in which the functions such as swimming pool, terrace, porch and parking would have a logical and fluid connection to the villa.

In the formation of the primary volume, in addition to how light could be received and simplicity in volume, the occupation area limits and the permitted height also involved, which eventually lay in two floors on the ground and one floor underground; service rooms, game room, sport room on the basement floor, public spaces and guest rooms on the ground floor, and private spaces on the first floor. The connection between these three floors was carried out by a metal circle stair through a void, which caused the natural circulation of the air.



OPHTHALMOLOGY CLINIC



The main idea behind the interior design of this clinic was to create a larger space for patient's waiting lobby and placement of two distinct but related rooms for ophthalmology and the neurologist. The large number of patient's files, the small room and also the huge number of patients on the peak time, have been the challenges in the process of designing of the project. In the designing of interior parts of this place we used relatively fluid forms and bright colors such as white and blue, which have greatly reduced the disordering of this place.

Designing benches attached to the wall and multi-sided furniture, made this possibility of creating more usable places to sit and use. Creating hidden and decorative shelves, and ordering patient's files differently by using new regulations provided better organization for secretary.



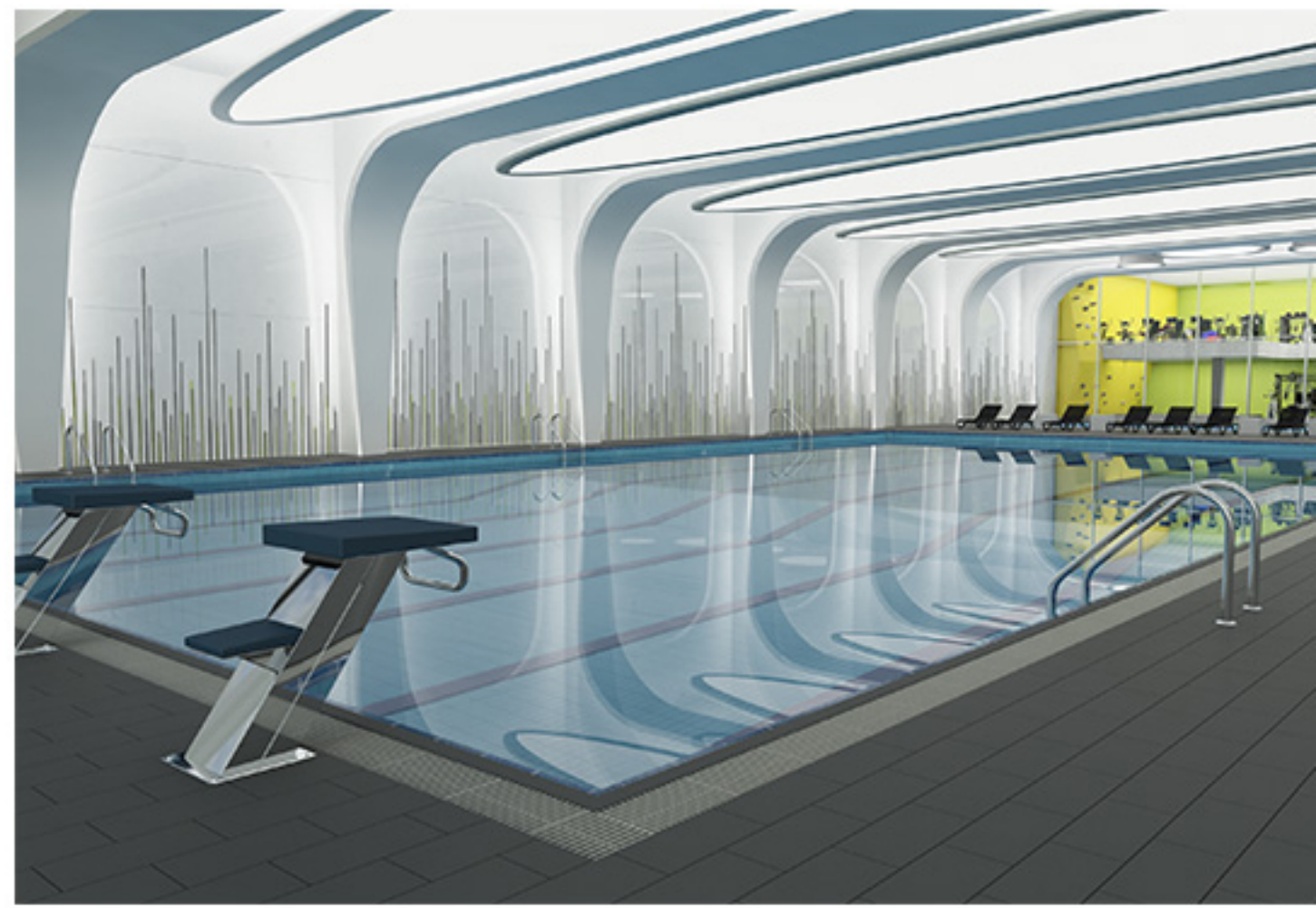
A double-sided cupboard/partition between doctor's rooms that we designed has given a special facility between these rooms. The lighting of this project has designed carefully and precisely to make a desirable atmosphere for this clinic.

PARDIS MULTI-PURPOSE COMPLEX





MODERN INTERIOR DESIGN



Pardis shopping center is a new multi-purpose complex in pardis new town. The scheme is divided into the six zones; a large retail space for fashion, a juice bar and a cafe, a food court and a restaurant on the roof, an indoor theme park and a hyper market. The design defines each of these zones through subtle shifts in materiality and color. The project employs unifying elements to tie the space together. The most material that have been used in project is wood. To reinforce a visual connection between the zones, we try to design different zones ceiling's with wood plank. In the retail area, wood planks, which feel more warmth and comfort, are rotated from ceiling on the walls to create an adjustable display space. The cafe is the main social space of the ground floor, where customers can recharge their bodies.

DARUS RESIDENTIAL BUILDING





Darous apartment is located in a rectangle land in Drous neighborhood. The building neighboring from north & west. The design program was to build a residential building in 7 floor, that include 5 residential floor. The whole design process and details, like column capital, dome, window frame and ... inspired by Basilica di san Giovanni in Lateran. One of the important method in classic design is to observe the symmetry method. The main challenge in this project was to design a symmetry facade with different plan and try to adjust the facade with plan. The privacy and entrance hierarchy, was considered in as well as residential space. The layout of interior spaces and the materials were designed to figure out desirability.



All things must be sealed correctly, what does this mean? I don't know how to explain it, I just know how to do it.



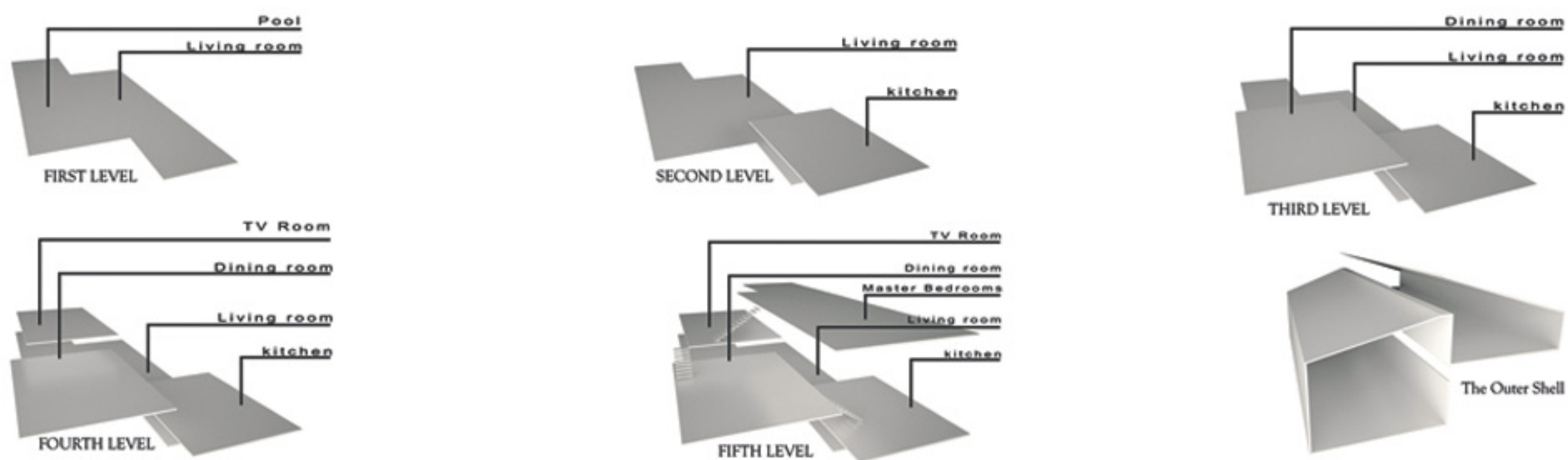
KELARDASHT VILLA



THE EXTRAORDINARY TOUCH OF SPACE



Villa No. 18, designed by N. Moradi, located in northern Iran, Kelardasht, villa. Designed on the idea of fluidity and transparency of the architectural space, the architect's effort is that the whole atmosphere in the house is understandable. Five general levels by rotating in height with different dimensions of space have formed Villas, so that the first level includes living and pool and patio, kitchen on the second level, third level includes dining room, and so on the fourth and fifth levels, TV room and bedrooms have been formed. The living space that is located next to the pool in addition to good vision emphasizes the presence of water in the building.



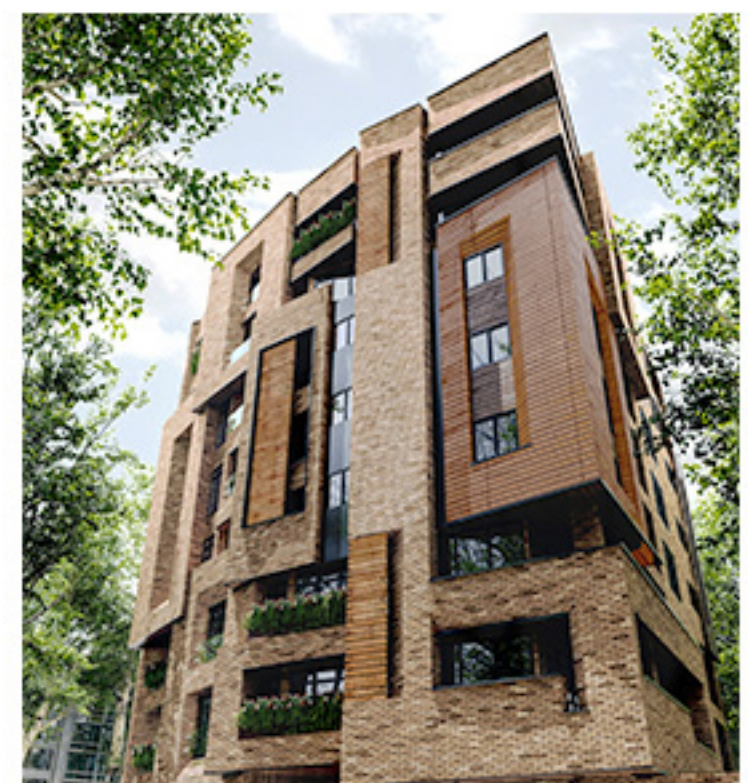
Part of it goes along open space and part of the inside when the windows are open, semi-open space integrated there. Furthermore a section of a shallow pond in the East, suggests the sense of clarity and purity of spirit in space. Porch and terraces that have been created by fill and empty the overall size of the volume, spatial relations within and outside of the building are determined. Terrace on the top floor is dedicated to the master bedrooms. Long tall windows light eruption interior and excellent visibility to the open space provided.

Sloping roof is integrated in the building's structure and it is concrete structure building. Floor heating system and air cooling are the mechanical system. The combination of exposed concrete and Thermo wood cover facade and the same material in the same covering formed interior area, in some walls white plastic cover has been replaced.

RENOVATION & INTERIOR DESIGN OF APARTMENT NO.203



ELAHIE RESIDENTIAL BUILDING



Elahie residential building was designed at 10 floor. Lobby, conference hall, kids play ground, sauna, parking and storage are located in 3 floor and the other 7 floor are residential.

This project located in a land that overlook a huge garden from south and to the street from 3 direction. According to the view and perspective of the landscape, also sun accessibility of the facade the designer try to have the most interaction with surrounding.

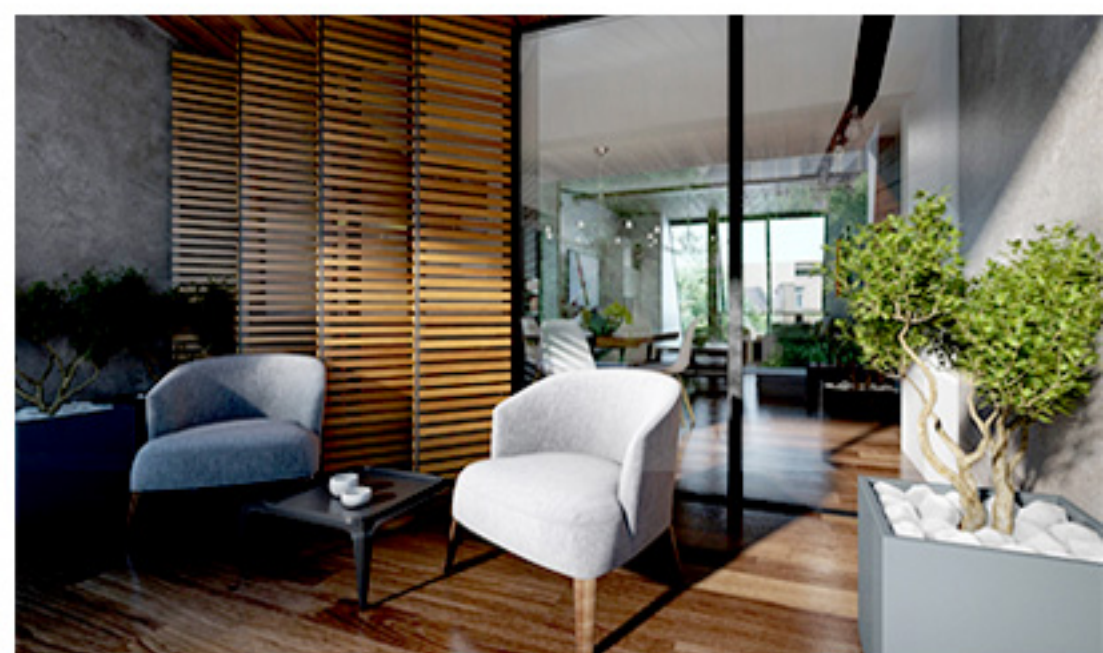
MANZH RESTAURANT



The concept of the interior design of Manzh restaurant is based on combination of modern and rustic design. Manzh seeks to make visitors feel special, from the food and drinks to the space and furniture design. There are 4 spaces in 2 floors that allow guests to have different sensations: there is a fast food at first floor to enjoy different taste of foods. The second floor is the place to spend pleasant evening enjoying Russian and French dishes. The VIP room is a space for special guests and also meetings. The bar is the spot for people to spend time with friends while serving a cocktail or appetizers. And finally the terrace, that you can enjoy the view. The main material of our design is wood and also using plants and flower boxes which is in line with outside nature. In choosing colors we tried to use grey, dark green and dark purple to balance the warm environment with cold colors. About the lighting, we chose the spot lights on each table to provide enough light in space.



RENOVATION & INTERIOR DESIGN OF KHARAZM VILLA



The project is located on an area of 1000 square meters in Shahrak-e Gharb , northwest of Tehran. The building consists of two duplex units. downstairs space is dedicated to public and private spaces, and in the upper floor there are private spaces including bedrooms,bathrooms and private hall.

The main actions conducted in the reconstruction of the building include:

Stage 1: Disassembling inappropriate blades and modifying and reinforcing old structures

Second stage: Repair of worn out facilities

Stage 3: New blade and implementation of modified architectural designs

Step Four: do joinery and implementation of the facade

Step Five: Run the yard and plant the plants

Step six: interior design of all spaces

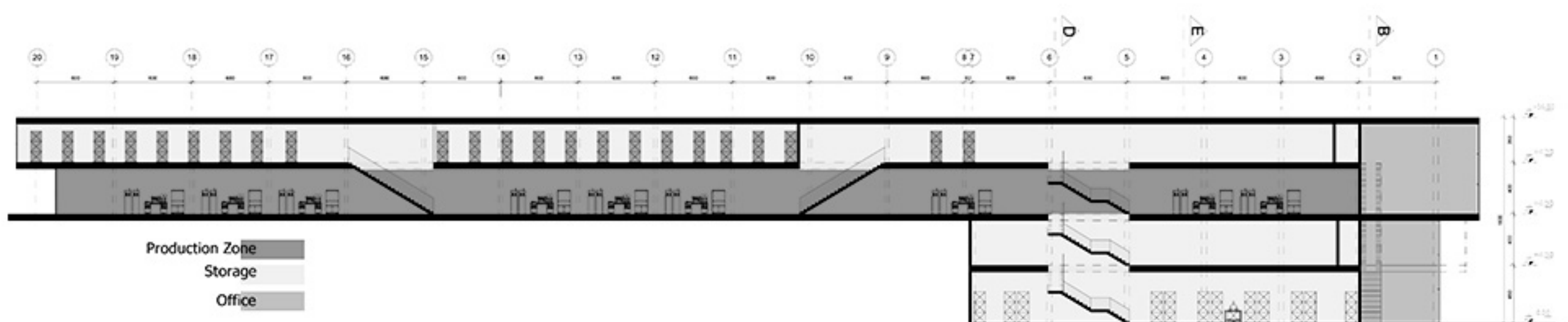


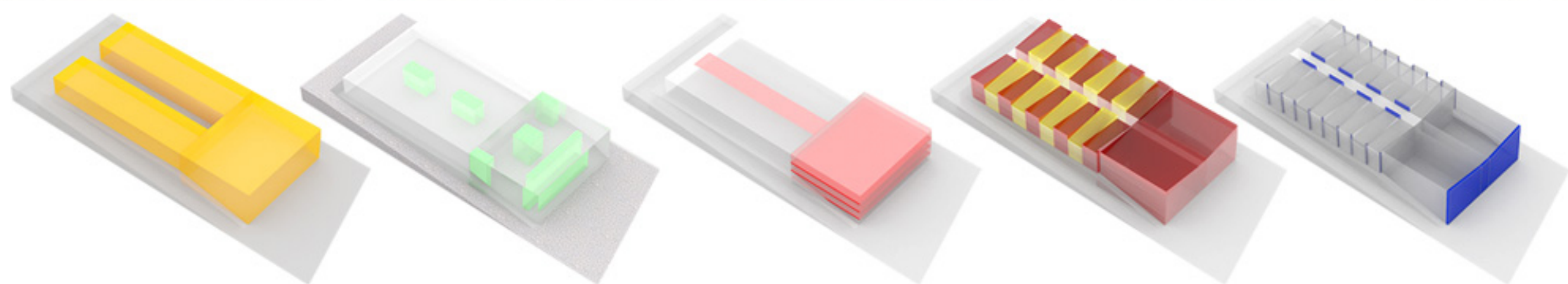
Details are the words of a poem that is the house.

ARYA FACTORY

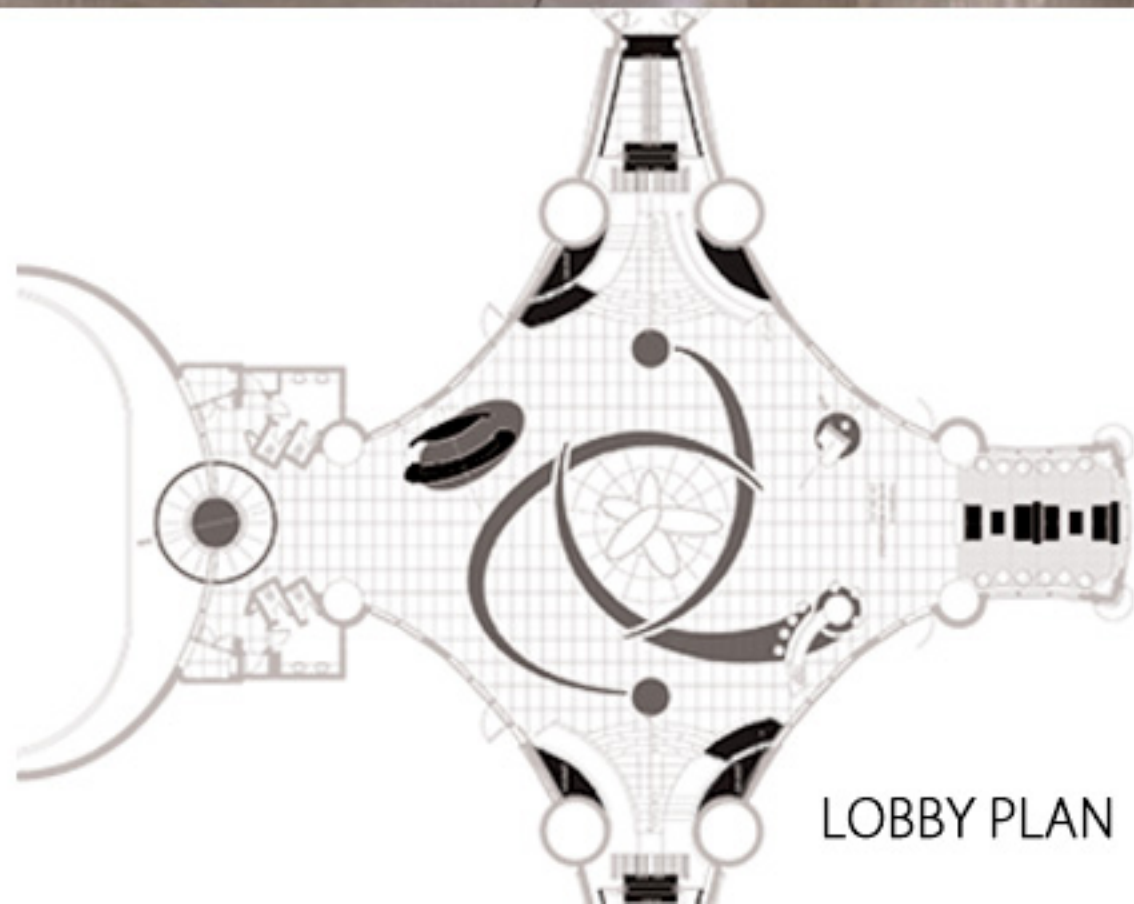
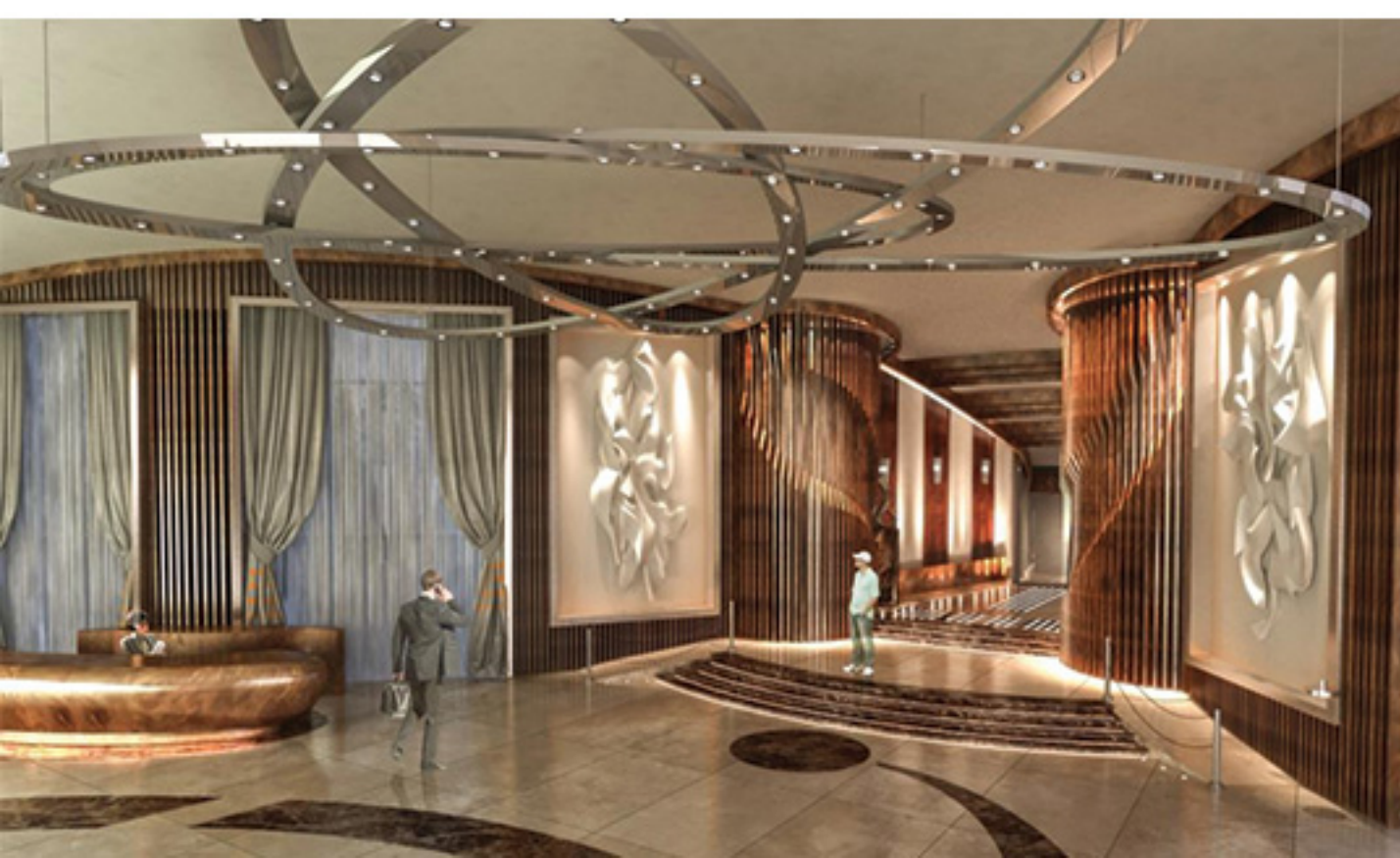


The new factory designed in 2016 with 2970 Sqm. Occupancy and 9162 Sqm. Infrastructure in 4 levels. It contains 4 main part, storage, 2 Production line, office . The office part placed in the center of plan to control the production line and final storage. Obviously, The office part overhanged and became glassy for the staff to catch the sun light and have a good view of the road. Products that have been stored to the primary storage, after passing through the production line will be transferred to the final storage for distribution to the market

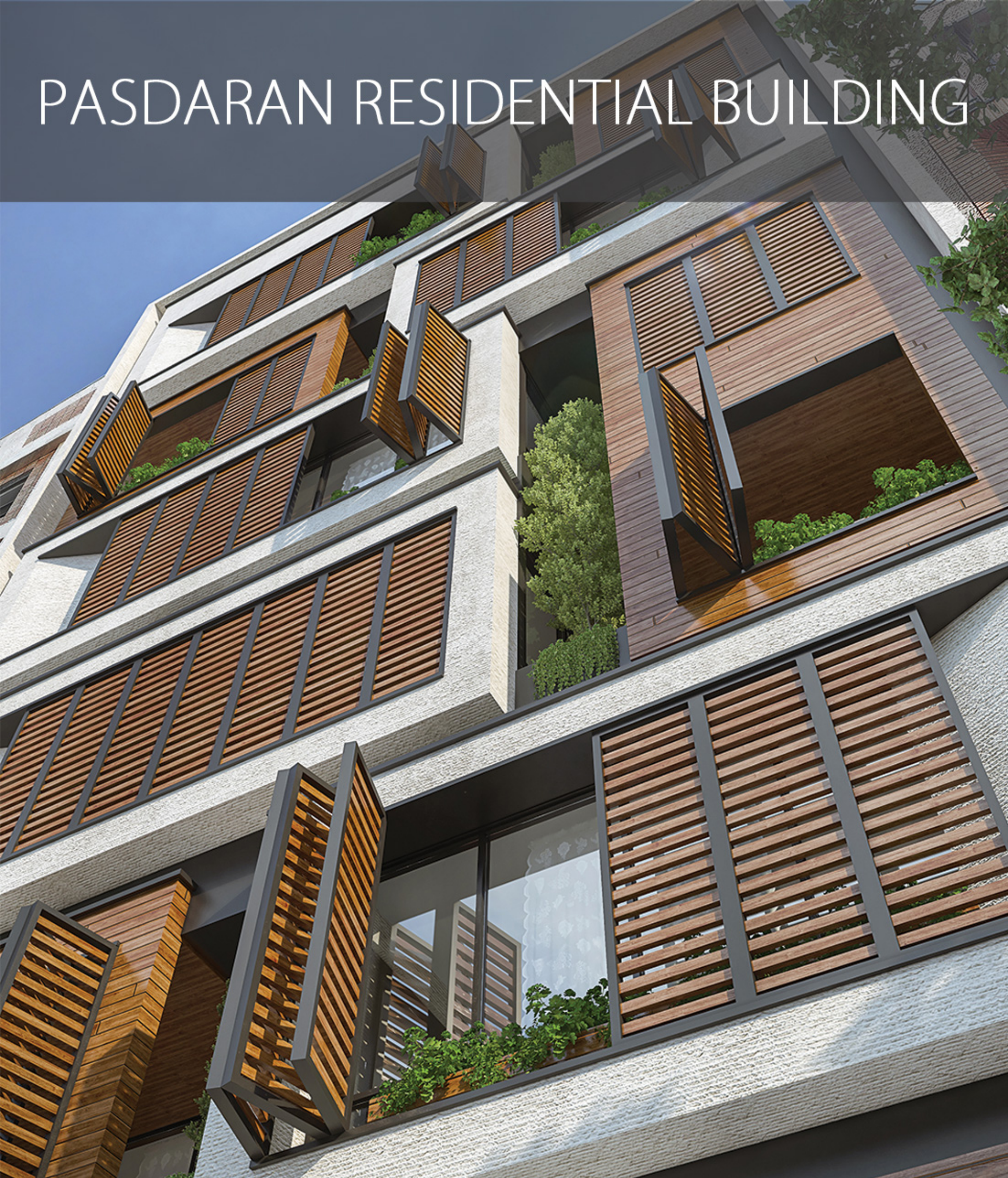




KISH TWIN TOWER



PASDARAN RESIDENTIAL BUILDING



Apartment no.47 is a five-story residential building located in Psdaran, northeast of Tehran. Each floor contains a single three-bedroom unit. The ground floor houses the main entrance, lobby and a multi-purpose room. Other amenities such as gym, sauna, Jacuzzi and parking are located in the basement. Historically a house bears special values in Iranian architecture and culture, values such as hierarchy, legibility, introversion, balance, and unity and specially respect to the privacy of families. During the past century, according to the changes in lifestyle and a large demand for new constructions, most of these precious values have been changed.

The main design idea behind Apartment no.47 was to revitalize the lost heritage and to give a modern interpretation to the old concepts. A combination of fixed wooden panels and protruded modular frames are used to create a modern and dynamic facade. The wooden panels in front of the windows act as a temperature buffer by filtering natural light. During different time of a day, the patterns create a beautiful effect of light and shadow inside each unit. Rooftop garden and modular flower boxes in front of the windows are designed to improve environmental quality while accentuating the aesthetic values.

Nasrin Moradi Studio

Unit 1, No. 15, East Ghobadian Alley, Jordan Ave, Tehran

Mobile: +989122654503 Tel/fax: +982188197081

2008-2019

www.nasrinmoradi.com

